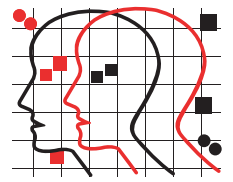


# Simulock

## Indicative Seal/Data Sheet



**MEGA FORTRIS  
NEW ZEALAND**

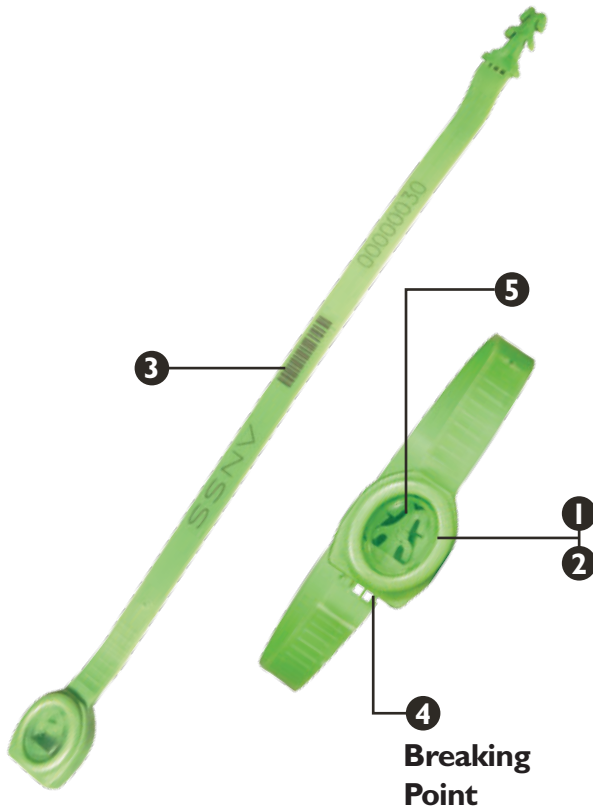


## Tamper-Evident Ring Seal

The Simulock is easy to apply and easy to inspect. This seal optimises security and operation efficiency. The unique features found on the Simulock make it so much more than just another ring seal.

Standard markings on the Simulock Seal include serial numbers and a standard barcode.

The Simulock is widely used for trucks and tankers, customs control, airline cargo, warehouses, roll cages, rail wagons, empty shipping containers, etc.



**Breaking  
Point**

## FEATURES

- 1 The transparent Inspection Window is a unique feature developed to enable quick and easy visual checking of the locking mechanism.
- 2 The Inspection Window is ultrasonically welded to the seal. Ultrasonic welding is permanent and strong; cutting or forcing it open will leave clear evidence of tampering.
- 3 The Simulock is etched with permanent laser marking, which offers the highest level of marking security.
- 4 The breaking point provides easy removal of the seal. Another prominent security feature is the security breaking

lines that prevent a broken seal from being glued or welded together without leaving evidence.

- 5 The simultaneous double-locking mechanism of the Simulock makes tampering very difficult.

## SPECIFICATIONS

Product Code	Material	Locking Size	Total Length
SMLK	Strap: PP Cap: PP	3.0 x 7.8mm	222.5mm
Tensile Strength	Marking Area	Max Marking Digits	
222.5mm	Flap: 6.0 x 120.0mm	Serial No: 13 Barcode: 11	

## OUTER CARTON

Qty per Carton	Dimensions	Weight kg/carton	Volume/carton
1000 pcs	318 x 284 x 210mm	3.78kgs	0.01897m <sup>3</sup>

**Standard colours**  
White and pastel blue

**NOTE: Non-specified colours available upon request.**

## CONTACT US

### NEW ZEALAND

Unit N, 150 Harris Road  
East Tamaki, Auckland  
PO Box 58397  
Botany 2163 Auckland  
Ph: +64 9 265 0262  
Toll-Free: 0800 723 322

[www.megafortris.co.nz](http://www.megafortris.co.nz)  
[www.securityseals.co.nz](http://www.securityseals.co.nz)

### AUSTRALIA

Unit 2, 20 Wilmette Place  
Mona Vale  
New South Wales 2103  
Ph: +61 2 9999 2324  
Toll-Free: 0800 723 322

[www.megafortris.com.au](http://www.megafortris.com.au)



ASK US ABOUT



**FMM EXCELLENCE  
AWARD 2012**  
QUEST FOR CONTINUOUS IMPROVEMENT  
BEST MANUFACTURER IN MALAYSIA IN 2012